

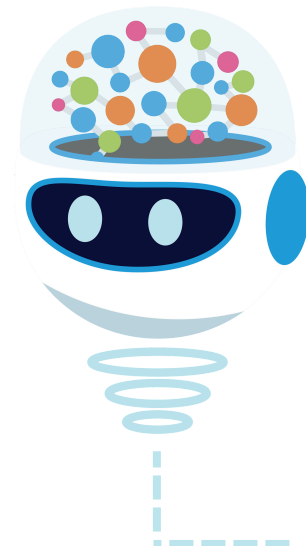
Liquid Voice vs. Red Box



WHY SWITCH NOW?

Uniphore's announcement to end-of-life Red Box and completely remove the product from their development roadmap has introduced significant limitations for existing customers.

With tighter vendor lock-in, reduced flexibility, and a reliance on the Uniphore ecosystem, organisations risk being tied to legacy technology that struggles to keep pace with modern compliance and scalability requirements. As support for standalone Red Box features declines, now is the time to consider a future-ready alternative that offers freedom, innovation, and long-term stability.



COMPARISON AT A GLANCE

Feature	LiquidVoice	Red Box
Data Ownership	✓ Full control of retention & disposal	✗ Vendor lock-in
Migration Ease	✓ Seamless switch (with CTI emulator)	✗ Requires export tools
Omnichannel Support	✓ Voice, video, text, radio all in one platform	✗ Primarily audio
Analytics	✓ AI-powered	✗ Limited
Interface	✓ Responsive support for all modern browsers	✗ High-security risk legacy UI
Compliance Monitoring	✓ Advanced (with automation capabilities)	✗ Basic
Scalability	✓ Highly scalable & flexible	✗ Restricted
Integrations	✓ Wide integration breadth - radio, voice & video	✗ Limited
Archiving	✓ No added costs for archiving & unlimited retention	✗ Additional costs

A SIMPLER SWITCH

Import legacy Red Box data without disruption, maintain your existing integrations with our CTI emulator, and validate the two platforms in parallel before full cutover - *without paying twice*.

Book your free Liquid Voice demo and consultation today
at liquidvoice.com or email sales@liquidvoice.com

